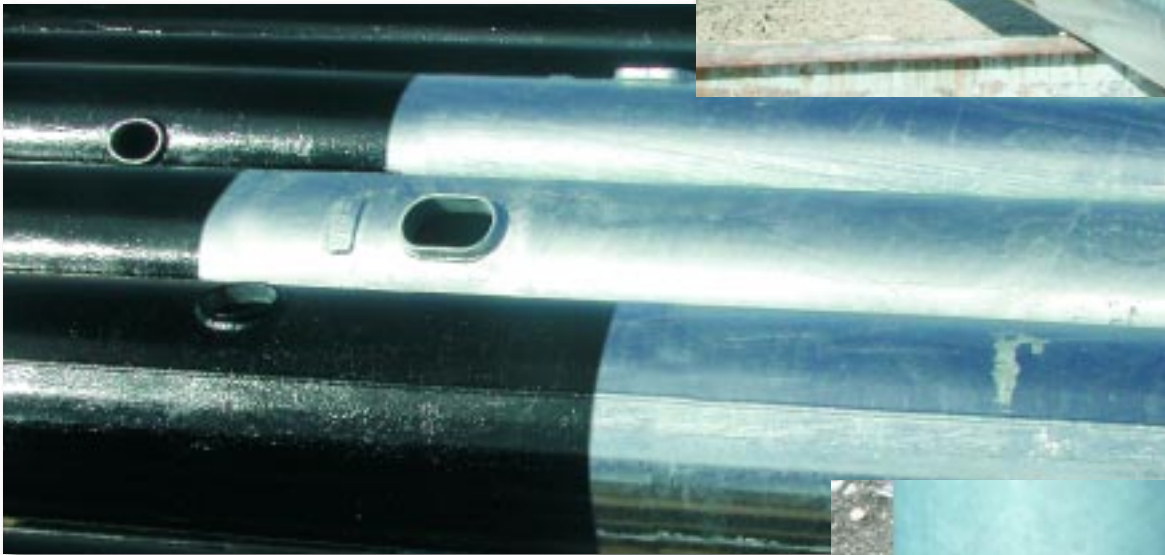


Black Asphaltum (Mastic Coating)

Black Asphaltum is an economical, highly protective, acid and alkali-resistant coating designed for general industrial use. This coating is used on commercial products such as rain gutters and by automakers for under coating frames, wheel fenders, chassis, etc. Whitco Company uses this product as a supplemental below-grade protective coating on direct embedded and stub-base pole structures. The advantages of Black Asphaltum are as follows:



- Superior resistance to acids and alkali.
- Excellent resistance to chemicals such as calcium chloride, sodium chloride and tri-sodium phosphates.
- Outstanding adhesion and wear resistance.
- Rust proofing properties.
- Meets performance requirements of TT-V-51F-Varnish: Asphalt.
- Free of lead and chromate hazards.

This protective coating is applied on either galvanized or powder-coated products to add a supplemental layer of corrosion protection. This combination of galvanizing and/or powder coating coupled with Black Asphaltum provides the best below-grade corrosion resistance in the industry.